



Retrofit Kit Portfolio

Solutions for Sustainability



Retrofit Kit Portfolio

Don't replace - Retrofit and Repurpose

What is Relight vs. typical retrofit lighting?

Most simple retrofits offered are nothing more than a fancy lamp change. They're focused only on quick wattage paybacks with no consideration for quality of light, aesthetics, or future-proofing your project. RELIGHT products from Lithonia Lighting are designed to provide all the performance, aesthetics, and controls capabilities of a brand-new luminaire, but they do it with a simple retrofit of the existing fixture in the ceiling.

Relight kits last longer and provide greater reliability over the long haul, and they can allow integrated controls that will make sure your investment is flexible and adaptable over time.

Why retrofit with Relight instead of just replacing my old fixtures?

- **Labor Savings** – Removing a decades-old light fixture from the ceiling and replacing it requires a lot of labor. So does cleaning up the mess it leaves! Relight kits install quickly in the existing fixture housing from below, without ever having to disturb the ceiling. Cleanup is minimal, and very little material will have to be carried out of the space and recycled.
- **Minimal Disruptions** – Since all work is done from below without disturbing the ceiling plane, Relights don't require a space to be vacated. Since much less material is coming into the space and even less is leaving, material staging doesn't create headaches. Installation of a Relight kit is typically as simple as a lamp conversion. Employees in the space can see the immediate improvements in the quality of light and feel like they're part of the green transformation.

- **More Sustainable** – Don't take old light fixtures out of the ceiling and send them to a scrapyard or a landfill – install Relight kits to repurpose those existing fluorescent fixtures into state-of-the-art LED luminaires. Because wireless and networked controls can be easily integrated into the Relight kit, additional energy savings are unlocked. Relight kits run much cooler than the old fixture, so expensive and energy-intensive air conditioning use can be significantly reduced.
- **Better Economics** – Relight kits provide all the energy savings of high-performance LED lighting fixtures, but at a significantly lower installed cost. In addition, Relight kits are typically eligible for maximum utility rebates in those areas where applicable (especially when ordered with integrated controls).

Relight for real ROI!

Relight products from Lithonia Lighting® have saved customers over \$1/2 billion over the last decade and that number grows every day. These customers have already reduced their collective carbon footprint by a total of over 14 million pounds of CO2.



High Performance
Lighting Solutions



Earthlight Sustainability
Program



Controls Enabled
Luminaires



For more information on potential rebates in your area, visit <https://www.acuitybrands.com/resources/retrofit-and-renovation/energy-efficient-products>

Troffer Kits

Universal designs and versatile choice of models allow retrofit of nearly any parabolic, lensed, or center basket troffer.

All Lay-In kits install completely from below, so the ceiling plane and plenum space is never disturbed.

- Universal design retrofit nearly any lensed troffer or parabolic
- Kits are UL Classified for use in both static and air-handling host housings. No need to verify ahead of installation.
- Broad range of wireless controls available, from simple occupancy sensing to networked smart building systems

Troffer Kits							
Family/ Configuration	Delivered Lumens	LPW	Lumen Maintenance	DLC	Retrofit Hosts	Optics	Controls
 BLTR	2BLT4R	2,000 - 8,500	125-146	L70>125,000 Hours L92 @ 50,000 Hours	5.0 Premium ¹ 5.1 Standard ²	Est. >98% of all existing 2x4 lensed troffer or parabolic fixtures; min 3.0" depth	Networked embedded controls by nLight [®] or standalone embedded controls by SensorSwitch™ Atrius
	2BLT2R	2,000 - 4,800	125-139		5.0 Premium ¹ 5.1 Standard ²	Est. >98% of all existing 2x2 lensed troffer or parabolic fixtures; min 3.0" depth	
	BLT4R	2,000 - 6,000	121-146		5.0 Premium ¹ 5.1 Standard ²	Est. >95% of all existing 1x4 lensed troffer or parabolic fixtures; min 3.0" depth	
 VTLR	2VTL4R	3,000 - 6,000	120-146	L80>60,000 Hours	5.0 Premium ³	Most 2x4 parabolics and many deeper lensed troffers; min 4.0" depth	Networked embedded controls by nLight [®] or standalone embedded controls by SensorSwitch™ Atrius
	2VTL2R	2,000 - 4,800	125-139		5.0 Premium ¹ 5.1 Standard ²	Most 2x2 parabolics and many deeper lensed troffers; min 4.0" depth	
 ESLR	2ESL4R	3,000 - 7,200	122-139	L80>60,000 Hours	5.0 Premium ¹ 5.1 Standard ²	Most parabolics and many deeper lensed troffers; min 4.0" depth	Networked embedded controls by nLight [®] Atrius
	2ESL2R	2,000 - 4,000	112-127		5.0 Premium ¹ 5.1 Standard ²	Most parabolics and many deeper lensed troffers; min 4.0" depth	

¹ DLC 5.0 is superseded by 5.1 on 6/30/2022

² DLC 5.1 in full effect 7/1/2022

See LBK page for simple lightbar troffer kit



BLTR



VTLR



ESLR

Best selling kit of its type in the industry

Lightbar Kits

Don't let your LED retrofit go down the tubes! LBK lightbar kits offer the reliability and long life of an integrated LED solution while providing a broad range of light outputs and options.

- Reliable, cost-effective LED option for nearly any fluorescent fixture with T8, T12, or T5/T5HO lamps
- Does not use fluorescent sockets for power delivery, eliminating that common safety concern
- Higher lumen maintenance with output exceeding L80 at 60,000 hours



Lightbar Kits									
Family/ Configuration	Delivered Lumens	LPW	Lumen Maintenance	DLC	Retrofit Hosts	Optics	Controls		
	LBK 4FT (1, 2, 3, 4 bars)	1,500 -12,000	150-170	L70>140,000 Hours L89 @ 50,000 Hours	5.0 Premium ¹ 5.1 Standard ²	Existing 4' fluorescent fixtures (troffers, wraps, vapor tights, coves, etc.)	Impact resistant diffuse acrylic	Networked embedded controls by nLight®	
	LBK 3FT (1, 2 bars)	1,450 - 5,650	145-160						Existing 3' fluorescent fixtures (troffers, wraps, vapor tights, coves, etc.)
	LBK 2FT (1, 2, 3, 4 bars)	1,475 -8,000	145-160						Existing 2' fluorescent fixtures (troffers, wraps, vapor tights, coves, etc.)

¹ DLC 5.0 is superseded by 5.1 on 6/30/2022

² DLC 5.1 in full effect 7/1/2022





Strip Kits

Traditional channel cover strip retrofits with enhanced optical options and a broad range of controls capability offer an improved solution for linear strip lighting.

- Retrofits almost any fluorescent strip fixture or low bay
- High lumen output available; up to 10,000 lumens in a 48-inch and 20,000 lumens in a 96-inch fixture
- Most kits are also available in 46" and 92" lengths for T5/T5HO fixtures



Strip Kits								
Family/ Configuration	Delivered Lumens	LPW	Lumen Maintenance	DLC	Retrofit Hosts	Optics	Controls	
	MRSL L48	1,750 - 5,000	131-150	L70>80,000 Hours L81 @ 50,000 Hours	5.0 Premium ¹ 5.1 Standard ²	4' strips with channel width of 4 to 5" (min 2" depth)	Impact resistant diffuse acrylic	Integrated sensors
	MRSL L96	3,500 - 10,000	142-150					
	UFITRS L48	4,000 - 10,000	127-151	SEF = L70 @ 62,500 hrs L75 @ 50,000 hrs HEF = L86 @ 50,000 hrs L70 @ 120,000 hrs	5.0 Premium ¹ 5.1 Standard ²	4' or 8' strips with channel width of 2.75" to 5.0"	Low glare diffuse wide acrylic	Networked embedded controls by nLight®
	UFITRS L96	8,000 - 20,000	129-151					
	UFITRL L48	4,000 - 10,000	127-151			4' or 8' fixture housings with a flat surface min 5.5" wide		
	UFITRL L96	8,000 - 20,000	129-151					
	UFITRF L48	4,000 - 10,000	127-151					
	UFITRF L96	8,000 - 20,000	129-151					

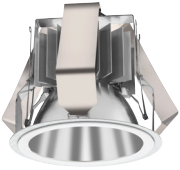
¹ DLC 5.0 is superseded by 5.1 on 6/30/2022

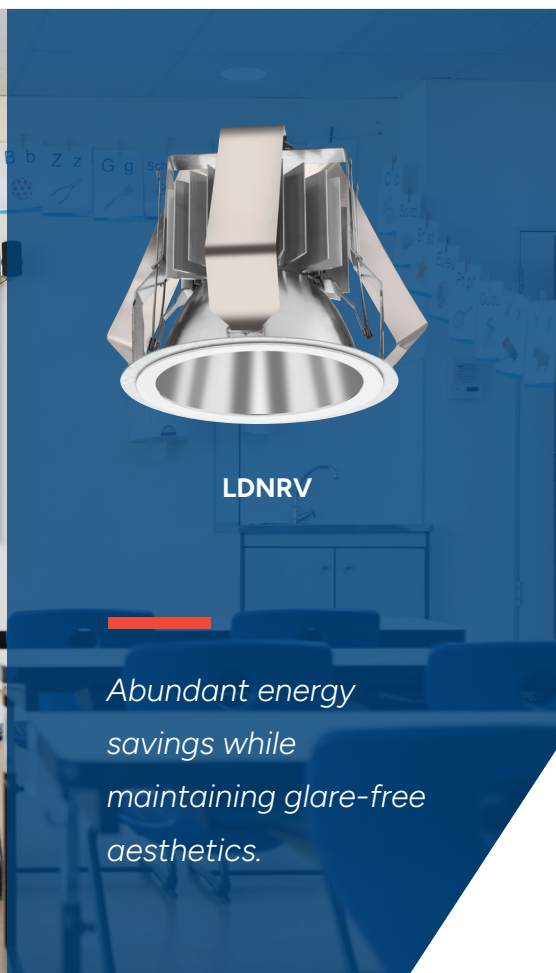
² DLC 5.1 in full effect 7/1/2022

Downlight Kits

With easy installation and broad aperture ranges, Relight is simple with Lithonia Lighting® LBR and LDNRV. These downlights provide the flexibility you need to improve lighting quality while saving money and time. Now, you can achieve a long-lasting solution without compromising a glare-free experience.

- Install from-below design for quick installation
- Abundant energy savings while maintaining glare-free aesthetics
- Broad offering of aperture sizes, drivers, accessories, and switchable CCTs and lumen

Downlight Kits								
Family/ Configuration	Delivered Lumens	LPW	Lumen Maintenance	DLC	Retrofit Hosts	Optics	Controls	
LBR 	LBR4	Switchable CCTs: 500/750/1000LM 1000/1500/2000LM	Up to 114	L80@60,000 Hours	N/A (Energy Star Listed)	Install-from-below	Networked embedded controls by nLight® or standalone embedded controls by SensorSwitch™	
	LBR6							
	LBR8							
	LBR10							
LDNRV 	LDNRV4	500 - 2,000	Up to 102	L70 @ 60,000 hrs	N/A (Energy Star Listed)	Innovative housing design that simultaneously retains and centers the fixture in the existing mounting frame General illumination lighting with 1.0 S/MH and 55° cutoff to source and source image Open wallwash kicker design provides a complimentary asymmetric washlight distribution	Networked embedded controls by nLight®	
	LDNRV6	500 - 3,000	Up to 92					
	LDNRV7	500 - 5,000	Up to 92					
	LDNRV8	500 - 12,000	Up to 89					
	LDNRV9	500 - 12,000	Up to 89					
	LDNRV10	500 - 12,000	Up to 89					



Control and Software Solutions

Our Technology Empowers Lighting

Control a single room with standalone embedded controls by SensorSwitch™ or leverage the full capabilities of a networked lighting control system for a room, building or campus with networked embedded controls by nLight®.

Performance You Can Count On

The standalone lighting controls designed for indoor room-based, industrial, or outdoor spaces. Easily find wired or wireless products designed with proven sensor technology, providing out-of-the-box operation to address rebate programs and simple code requirements for new construction and retrofit projects.



www.SensorSwitch.com

Your Site. One System.

Your one networked lighting control system that scales and adapts to your needs from a single room to an entire campus, both wired and wireless, indoors and out. The flexible and optimizable nLight® system, addresses code requirements and enhances your energy and operational efficiencies. Built into the fabric of your building, create a connected experience that promotes comfort, offers personalized control, and curates user-centered spaces that evoke the desired mood.

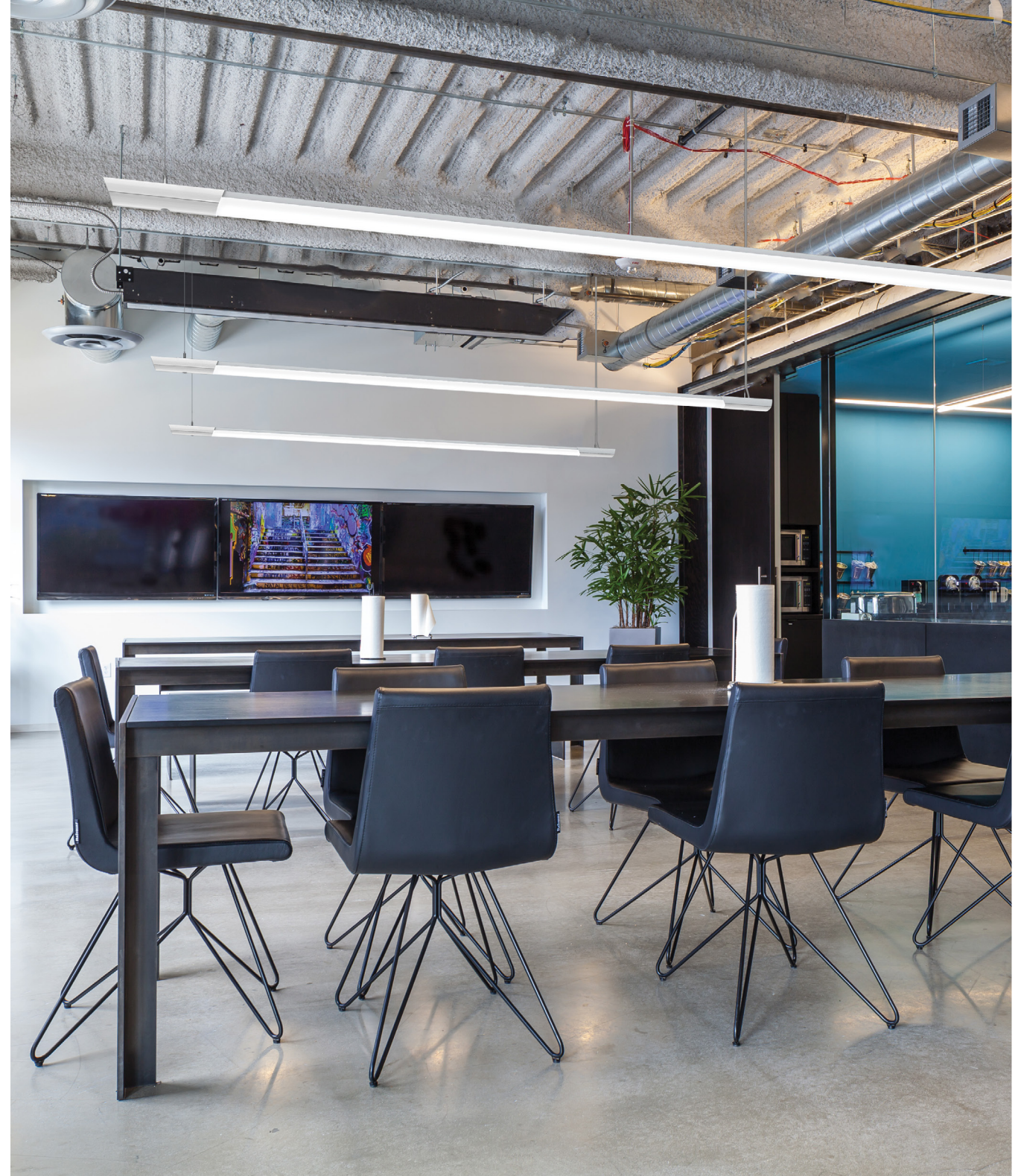
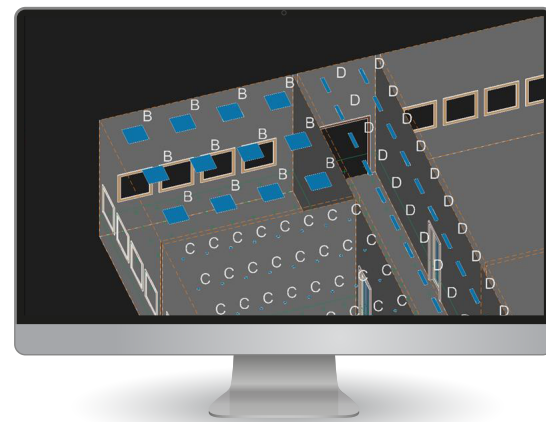


www.nLight.acuitybrands.com



Win with Visual™

Simplify your lighting design process using Visual® Lighting. Create fixture schedules, design your space, and generate lighting calculations



Extend Atrius location services and spatial insights by enabling location tracking through asset tags. With nLight you can track and draw business insights from thousands of items while maintaining full control of your lights.



To learn more about RETROFIT KITS
visit www.LithoniaLighting.com



Join the conversation - follow us on social media.